

SUSPENDED FRAMING DETAILS

1 1/2" ± 1'-0"

OOD-S031-S00-DETL

S

NOT USED

N.T.S.

H

MTL STUD FRAMING, TYP. SEE WALL LEGEND ON ARCH DRAWINGS, # DETAIL N/S01.01 FOR STUD MATRIX

2" x 2" x 16 GA CHANNEL CLIP ANGLE 1/4" LESS THAN STUD WIDTH, TYP. - ATTACH AT EVERY STUD WITH (4) #8 SCREWS

AT LOCATIONS WHERE VERTICAL STUD SPACING IS TIGHT, (MAKING INSTALLATION OF ANGLES DIFFICULT AFTER STUDS ARE IN PLACE), ATTACH ANGLES TO STUDS BEFORE INSTALLING STUDS.

1 1/2" WIDE x 1/2" DP x 16 GA COLD-ROLLED CHANNEL - LOCATE AT 5'-0" O.C. MAX VERTICALLY

NOTE: BRIDGING IS NOT REQUIRED IF SHEATHING IS ATTACHED TO BOTH FACES OF THE STUD. (SHEATHING INCLUDES, BUT IS NOT LIMITED TO, GYPSUM BOARD, PLYWOOD, CEMENT BOARD, ETC.)

18 GA DEEP LEG TRACK WITH 2" FLANGE (DEPTH TO MATCH VERTICAL STUD DEPTH) ATTACH TO STRUCTURE W/ (2) 0.205" DIA. PAF OR (2) #12 SCREWS AT 16" O.C.

18 GA DEEP LEG TRACK WITH 2" FLANGE (DEPTH TO MATCH VERTICAL STUD DEPTH) ATTACH TO STRUCTURE W/ (2) 0.205" DIA. PAF OR (2) #12 SCREWS AT 16" O.C.

3/4" MAX

3/4" MAX

1" DEFL. GAP

1" DEFL. GAP

SEE SCHEDULES FOR FINISHES AND STUD SIZES

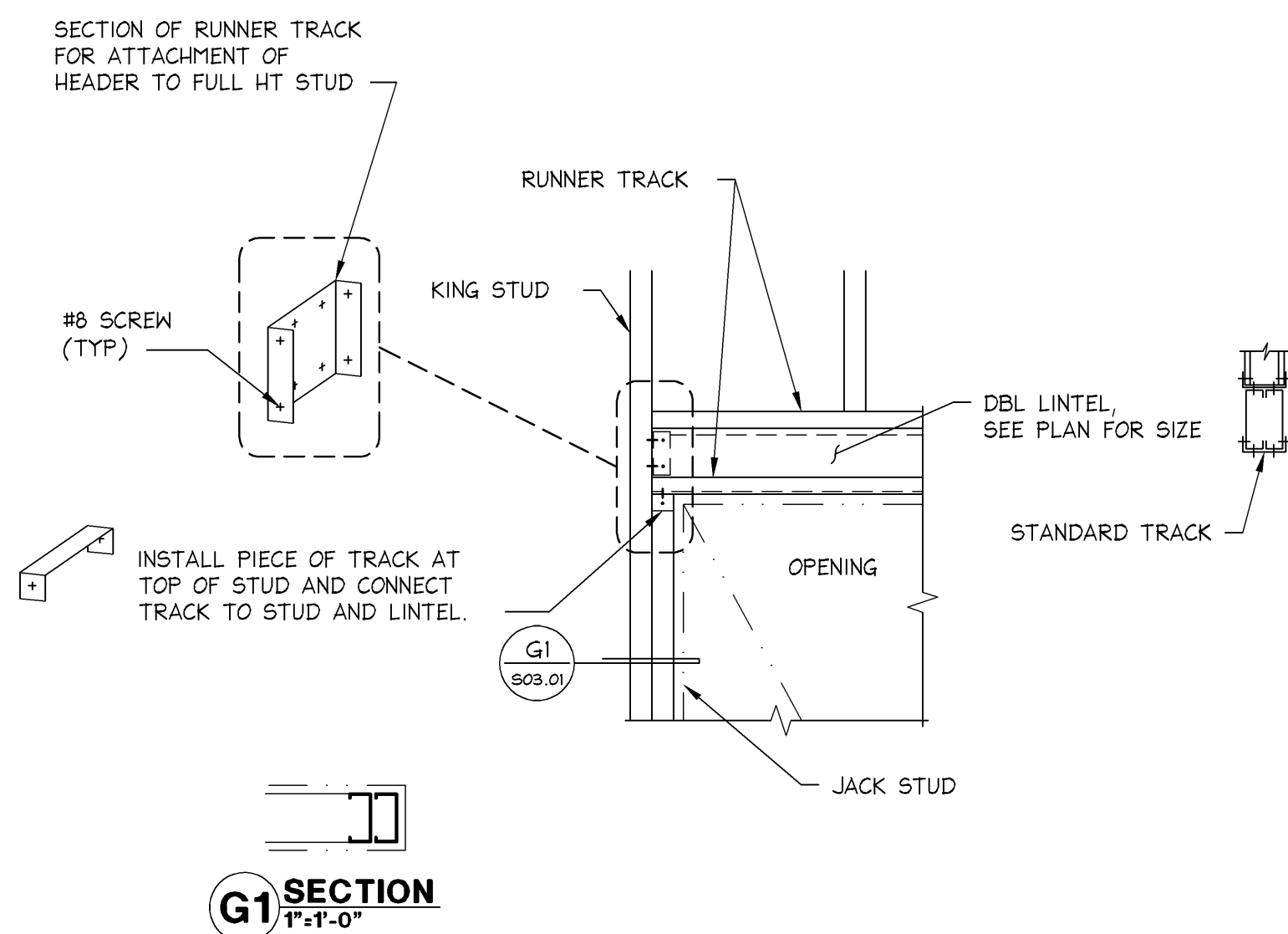
STANDARD TRACK W/ (1) #8 WAFERHEAD SCREW IN EACH FLANGE OF EACH VERT STUD

INSTALL SLIP TRACK AND FIRE-RATING MATERIALS PER MANUFACTURER'S RECOMMENDATIONS TO ACHIEVE ONE HOUR FIRE RATING

(NON-RATED)

(ONE HOUR FIRE-RATED)

NOTE: CONSTRUCT WALL PER UL ASSEMBLY REQUIREMENTS SHOWN ON ARCHITECTURAL DRAWINGS.



BRIDGING DETAIL

N.T.S.

OOD-S031-R00-DETL

R

DEFLECTION TRACK SEISMIC DESIGN CATEGORIES A, B & C

3" ± 1'-0"

OOD-S031-L00-DETL

L

LIGHTGAGE LINTEL DETAIL

1" ± 1'-0"

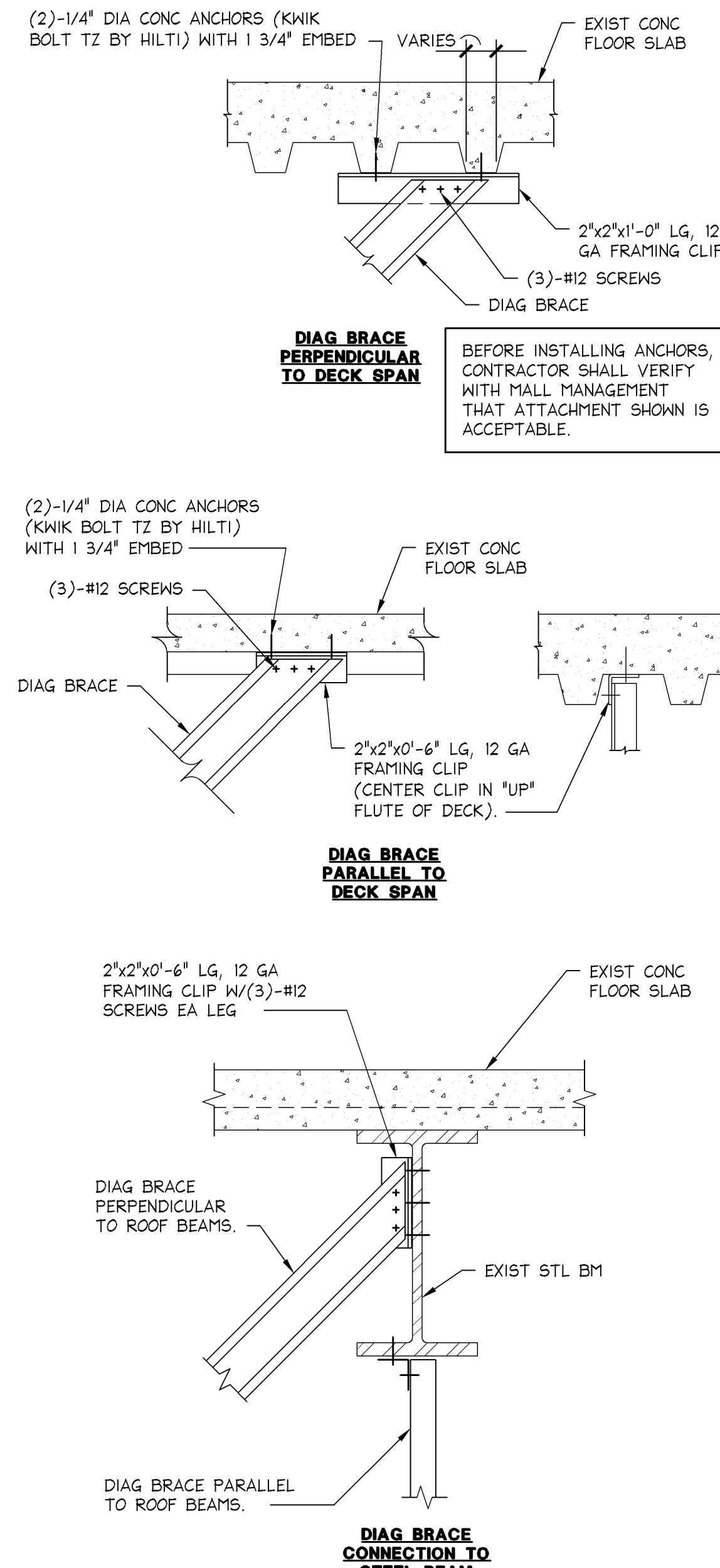
OOD-S031-G00-DETL

G

NOT USED

N.T.S.

C



NOT USED

N.T.S.

N

NOT USED

N.T.S.

J

TYPICAL DIAGONAL BRACE CONNECTION COMP MTL DECK/ CONC SLAB ON STL BEAMS

1 1/2" ± 1'-0"

OOD-S031-E01-BRAC

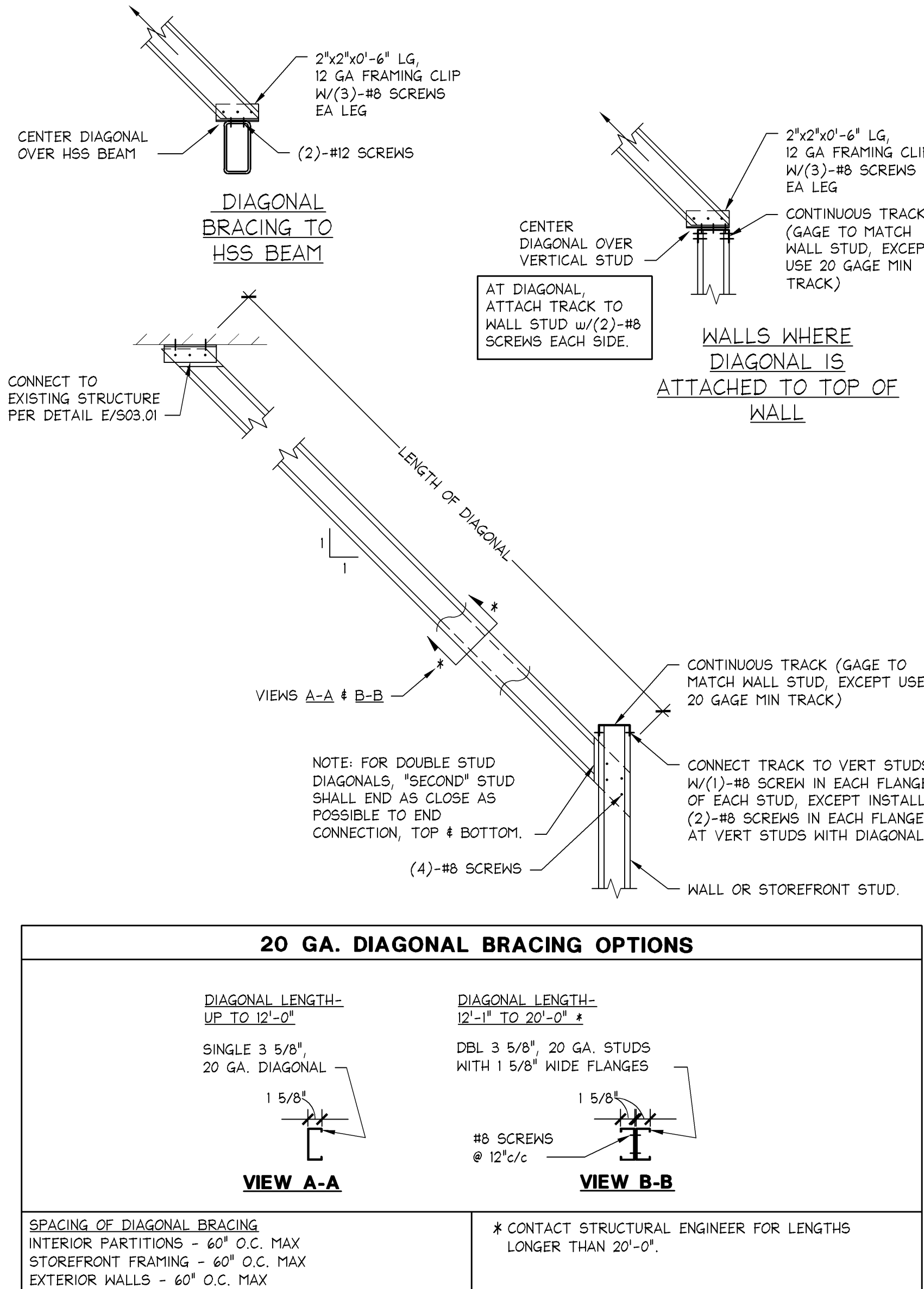
E

TYPICAL DIAGONAL BRACING SEISMIC DESIGN CATEGORY C

1" ± 1'-0"

05D-S031-A02-BRAC

A



20 GA. DIAGONAL BRACING OPTIONS

DIAGONAL LENGTH- UP TO 12'-0"

SINGLE 3 5/8", 20 GA. DIAGONAL

1 5/8"

#8 SCREWS @ 12" c/c

VIEW A-A

DIAGONAL LENGTH- 12'-0" TO 20'-0"

DBL 3 5/8", 20 GA. STUDS WITH 1 5/8" WIDE FLANGES

1 5/8"

#8 SCREWS @ 12" c/c

VIEW B-B

SPACING OF DIAGONAL BRACING
INTERIOR PARTITIONS - 60' O.C. MAX
STOREFRONT FRAMING - 60' O.C. MAX
EXTERIOR WALLS - 60' O.C. MAX

* CONTACT STRUCTURAL ENGINEER FOR LENGTHS LONGER THAN 20'-0".

010500485

VICTORIA'S SECRET
CAROLINA PLACE
11025 CAROLINA PLACE PKWY
SPACE B-14
PINEVILLE, NC 28134

PROJECT INFORMATION:

REVISIONS:

REQUIRED BY:

DATE

ELITE CONSTRUCTION GROUP
LAKE JACKSON, TX
PHONE: 979-285-0712
NOTE: THESE PRINTS HAVE BEEN
REDUCED BY 50 PERCENT SCALE
WILL BE 50 PERCENT OF WHAT IS
NOTED ON PLANS

DATE ISSUED:

DESIGNED BY:

DRAWN BY:

CHECKED BY:

9/26/14

TBA

TBA

DJS

STRUCTURAL
CONSTRUCTION
DETAILS

DRAWING NUMBER:

S03.01

THORSON • BAKER + ASSOCIATES
CONSULTING ENGINEERS
3030 West Streetsboro Road
Richfield, Ohio 44286
(330) 659-6688 Ph.
(330) 659-6675 Fax

LIMITED STORE PLANNING, INC.
d/b/a STORE DESIGN & CONSTRUCTION
Three Limited Parkway • Columbus, Ohio 43230
Telephone: 614.415.7000 • Fax: 614.415.7349